

Forest Road Inventory & Assessment (FRIA)





Forest Road Inventory & Assessment

Non-SFO

- road inventory
- project planning
- reporting process





Road Types



Active – roads currently being used or maintained for the purpose of removing commercial forest products.

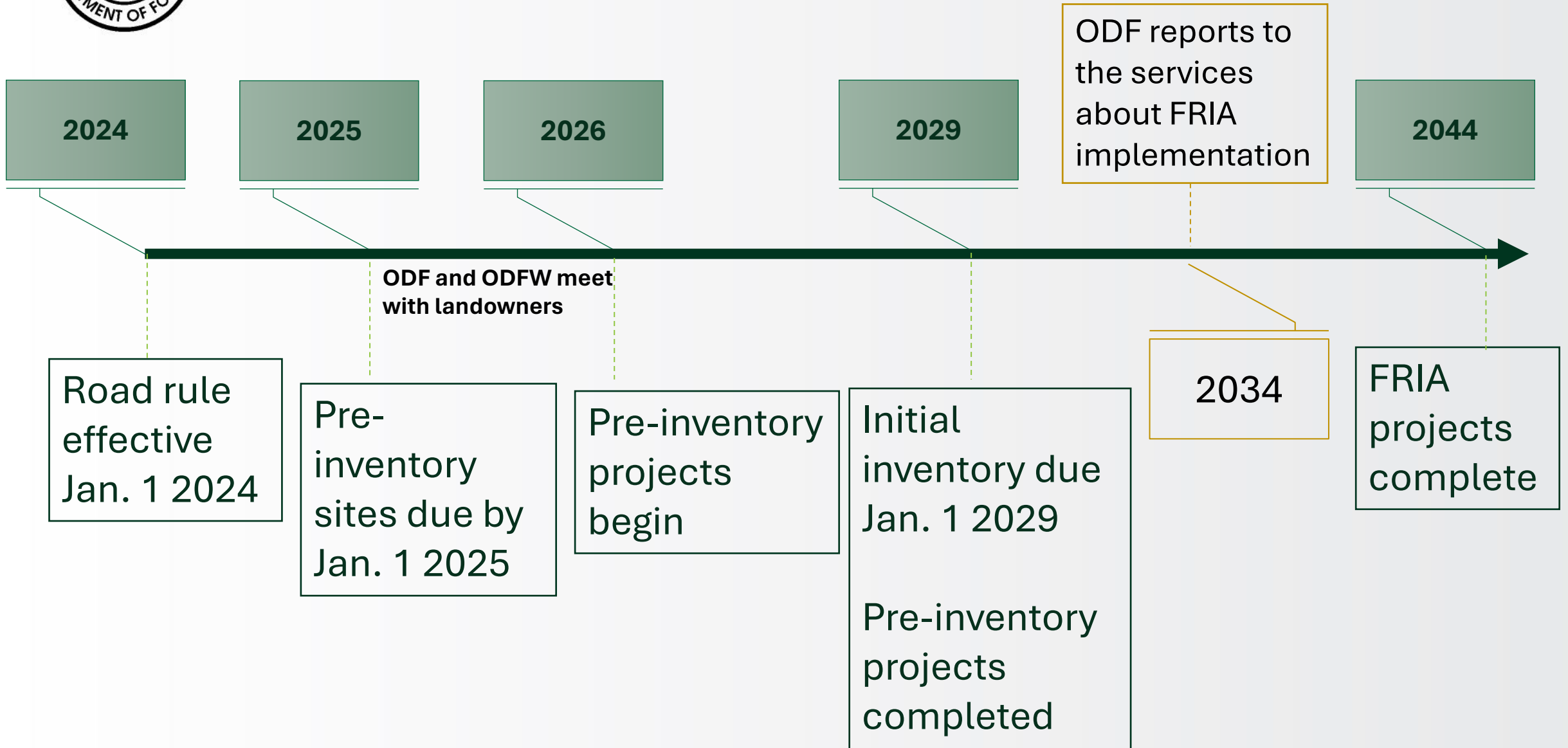
Inactive – roads used for forest management purposes exclusive of removing commercial forest products.

Vacated – roads that have been made impassable and are no longer to be used for forest management purposes or commercial forest harvesting activities.

Abandoned – defined as roads that were constructed prior to 1972 and do not meet the criteria of active, inactive, or vacated roads. This does not include skid trails.



Timeline





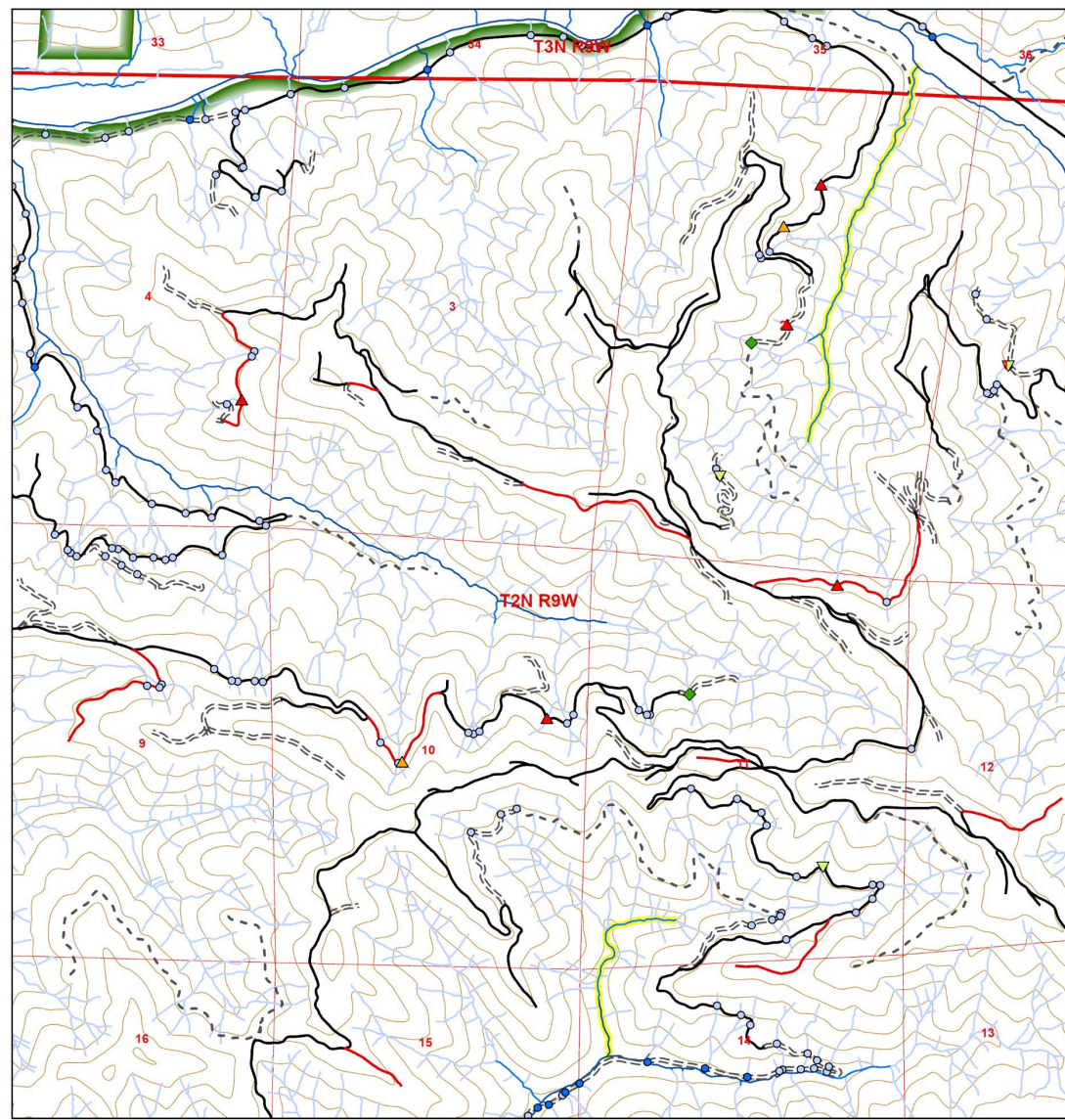
Road Management Blocks (RMBs)

"Road management blocks" - geographically distinct ownership blocks for which a landowner is encouraged to conduct a FRIA

- Landowner discretion with ODF support/guidance

For each RMB the FRIA process will involve three components:

- Pre-inventory
- Initial inventory
- Annual Report and Plan



Example Road Management Block
Oregon Department of Forestry

Map 5 of 9

1	2	3
4	5	6
7	8	9

0 0.13 0.25 0.5 mi
1:24,000
NAD 1983 Oregon Statewide Lambert International Feet
ESPG 2992

Crossings

- Fully Functioning Type F or SSBT
- Fully Functioning Type N or D
- ▲ Imminent Risk
- ▲ Minimum Risk
- ◆ Undetermined

Road Type

- Does Not Meet FPR
- Meets FPR
- == Vacated
- Abandoned

Stream Type

- Type SSBT
- Type F
- Type N
- 303(d) Listed

Other Road-Related Fish Passage Barriers

- ▼

Road Management Block Boundary

-

This product is an example of a FRIA map submission. It is available for informational purposes only and does not include every possible FRIA data point. This information is provided with the understanding that conclusions drawn from such information are the responsibility of the user.



January 1, 2025

Pre-inventory

High Conservation Value Sites

- Areas of known chronic sedimentation
 - *Consideration given to areas where log hauling will occur between 2024-2029*
- Fish passage barriers known to be of significant concern
 - *Prioritization based on greatest benefit to native migratory fish*
- Ongoing stream diversions at stream crossings and areas with stream diversion potential
- Areas of known hydrologic connectivity



January 1, 2029

Initial Inventory

Core documents

- Maps
- Work Matrix
- FRIA plan





FRIA Initial Inventory

Minimum data to be included in the Initial Inventory

OAR 629-625-0900(6)

Roads

- Locations
- Lengths
- Type
- Status

Streams

- Locations
- Classifications

Crossings

- Locations
- Type
 - *Culvert Status*
- Material assessment
- Known or potential fish passage barriers
- Date of install



January 1, 2029

Initial Inventory

The inventory will identify **road segments** as:

- Meets FPA
- Does not meet FPA
- Abandoned
- Vacated

(in accordance with OAR 629-625-0650)





January 1, 2029

Initial Inventory

The inventory will identify *water crossing culverts* as:

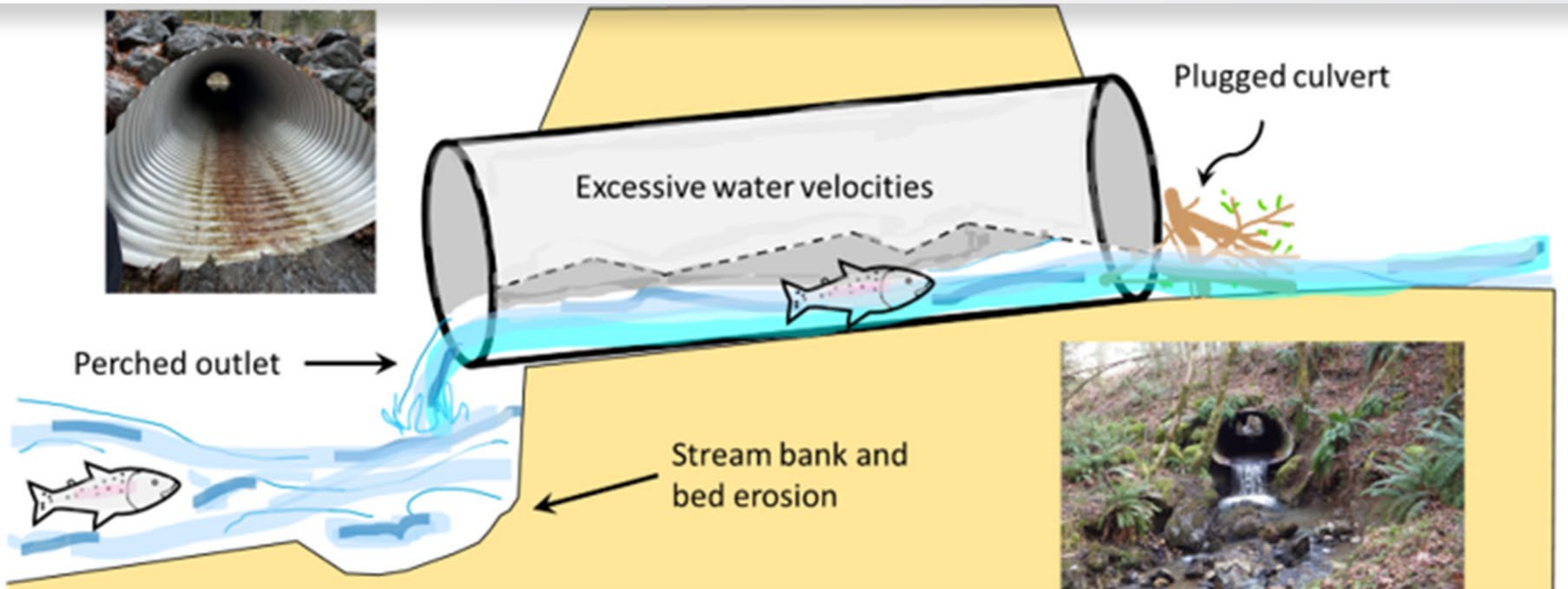
- Fully functioning in Type F or Type SSBT
- Fully functioning in Type N or Type D
- Culvert with imminent risk of failure
- Culvert with minimum risks to public resources
- Undetermined status





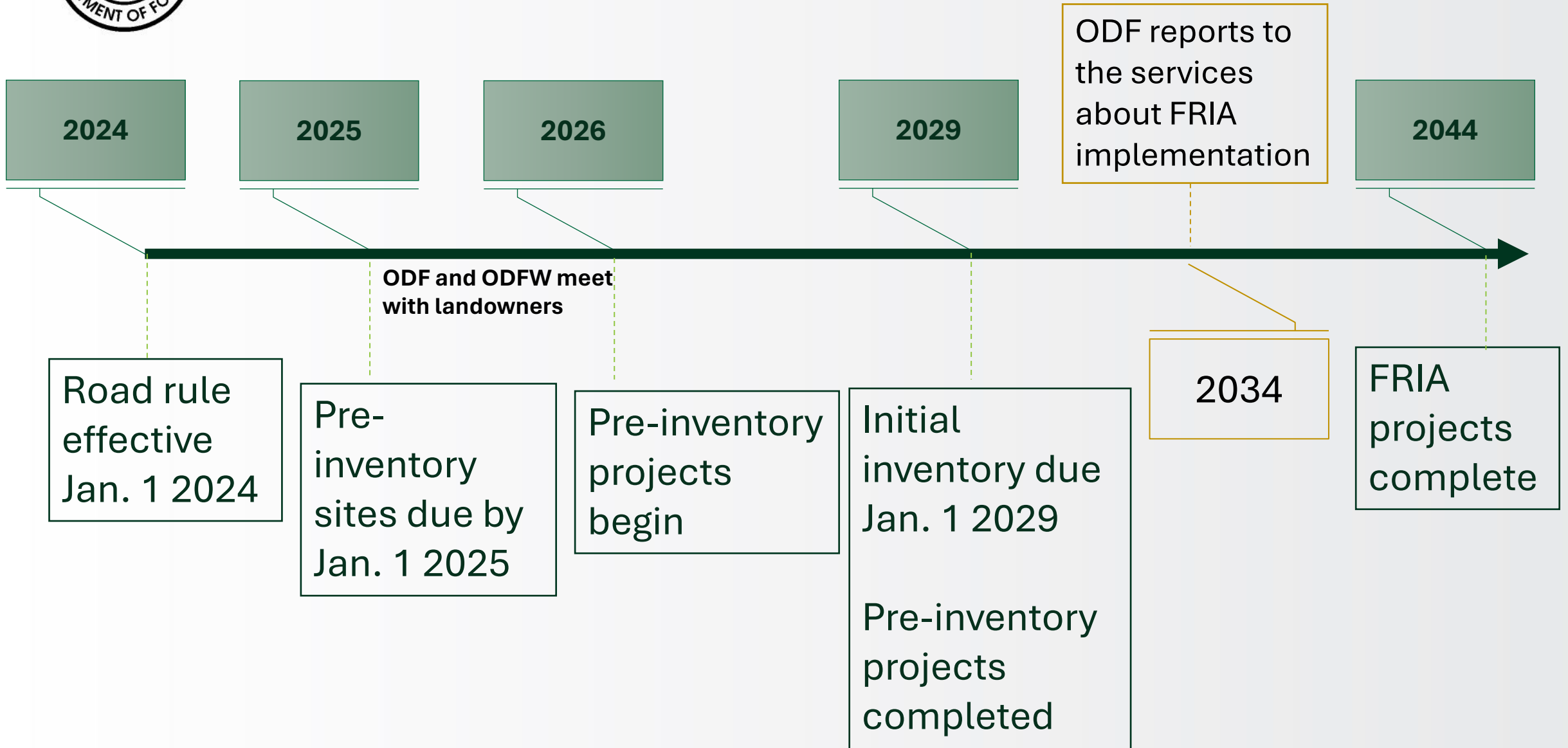
Fish Passage

- Each water crossing on Type F or Type SSBT streams must have a fish passage assessment conducted.
- Water crossing culverts with potential fish passage barriers will not be considered pre-existing culverts.





Timeline





Annual Reporting

Category	Description
Total length of forest roads improved	Detail the total lineal length of forest roads improved over the course of the annual period and the FRIA process.
Total length of forest roads improved by compliance with OAR 629-625-0330(1).	Detail the total lineal length of forest roads improved by drainage.
Total length of forest roads still requiring improvement	Remaining miles of road still requiring improvements.
Total length of forest roads planned for improvements in the upcoming year	Details of the upcoming year plan to improve forest roads and nature of work.
Total length of forest roads vacated	Detail the total length of roads vacated over the course of the annual period and the FRIA process.
Total length of forest roads planned to be vacated in the upcoming year	Detail the total length of roads planning to be vacated over the annual period, and nature of work.
Number of fish barriers brought into FPA compliance	Total number of culverts or other barriers fixed to be compliant with OAR 629-625-0320 over the course of the annual period and the FRIA process.
Fish barriers to be addressed in the upcoming year	Total number and location of fish barriers to be improved in the annual period.
Certification that landowner remains on track to complete required improvements by January 1, 2044	Landowner to certify, after review of inventory, work history, and plans that they believe they will meet FRIA completion deadline. Failure to certify requires landowner to seek immediate extension from ODF.



FRIA Annual Reporting

OAR 629-625-0900(7)(8)

Following the Initial Inventory Report, landowners will submit annual inventory reports and plans until **January 1, 2044**.

These will include updates to all 3 core documents.

	Work Matrix	Maps	FRIA Plan
Work accomplished during calendar year	X	X	X
Upcoming work scheduled for calendar year	X		X
Additional information discovered	X	X	
Changes in prioritization	X	X	
Certification and general plan to complete all improvements by 01/01/2044			X



Thank you!

Arden R. Guinn

Forest Roads Inventory and Assessment (FRIA) Coordinator

Oregon Department of Forestry – Forest Resources Division

2600 State Street, Salem, OR 97310

Cell: 971-375-5271

Email: Arden.r.guinn@odf.oregon.gov